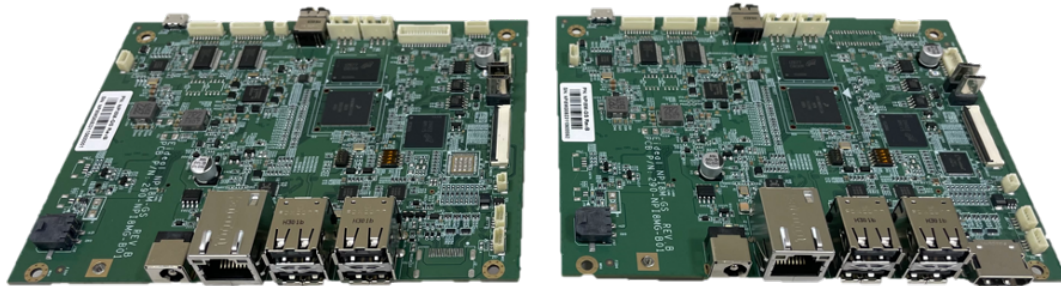


NPI8M-GS



NXP® i.MX 8M Mini - Arm® Cortex®-A53, Cortex®-M4, LPDDR4, LVDS, HDMI, eMMC, LAN, UART, USB, Audio out, Micro-SD, M.2 E-Key

Features

- 32GB on board eMMC and Micro-SD card for storage capacity
- 4GB LPDDR4
- Support Android 12
- Temperature Range: -40°C ~ +85°C

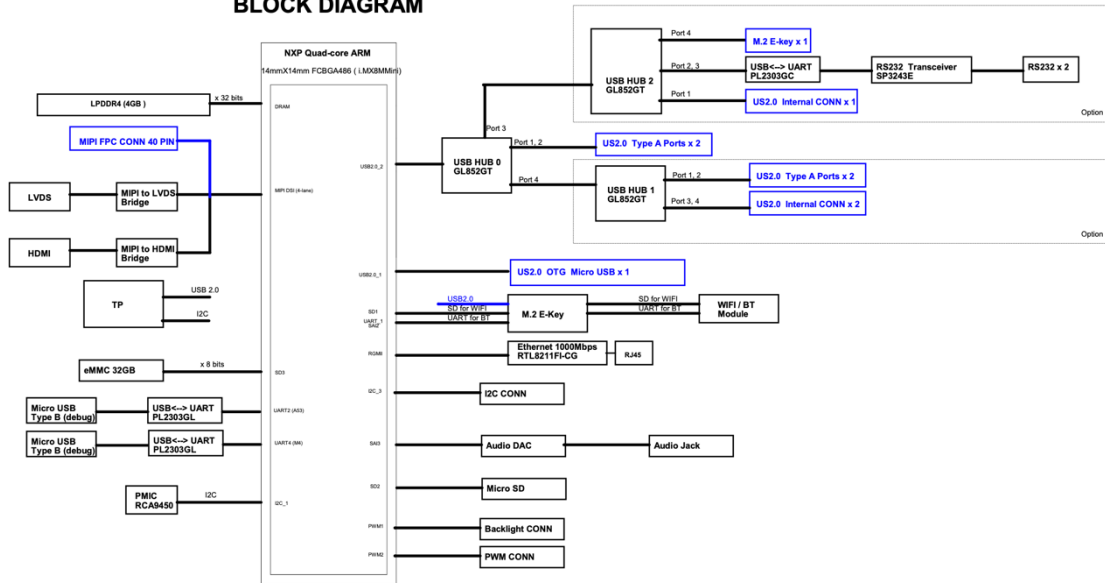
Specification

Processor	CPU MAX. Speed L2 Cache	i.MX 8M Mini 1.6GHz 512kB
Memory	Technology Max.	LPDDR4 4GB on board
Display (Single display)	HDMI LVDS MIPI	1, Support HDMI 1.4b 1080P 1, Support 2-channels LVDS 1, 4 lanes DSI
Expansion Slot	M.2 Others	1, M.2 2230 E-Key (For Wi-Fi/Bluetooth module USB/SDIO/UART interface) 1, Micro-SD card slot
Ethernet	Speed Controller Connector	10/100/1000Mbps RTL8211FI 1, RJ-45
Storage	eMMC	1, 32GB on board eMMC
Front I/O	HDMI USB-A	1, Standard type A 4@Type A, 5V/0.5A

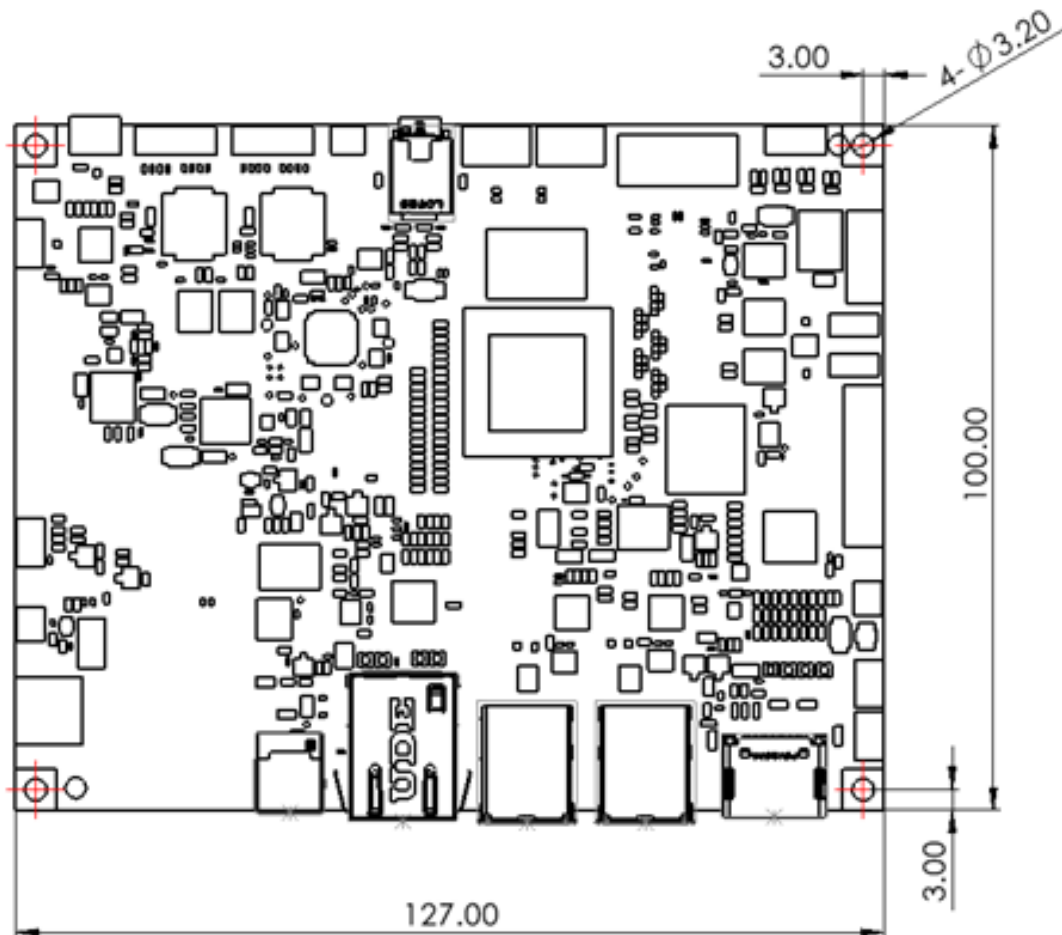
	Ethernet DC Jack	1, RJ-45 1, DC 12V input (DC 9V ~ 36V input option)
Real I/O	Audio DAC Connector	Out CS4344 1, 3.5mm 4-pole phone Jack
Internal Conn.	USB 2.0 RS232 I2C Micro-SD Panel Backlight MIPI-DSI DC-IN Power indicator LED FAN	3 2 1 1 1 1 1 1 1 2
Power	Power Type Voltage	DC power input (OD:5.5mm/ID:2.5mm & Internal connector) 12V DC input (DC 9V ~ 36V input option)
Operating System	Android	Android 12
Environment	Operating Temp. Storage Temp. Relative Humidity	-40~+85°C -40~+125°C 10~95%
Dimension	Form Factor	127mm*100mm*19.42mm
Certification	Safety	CE, FCC

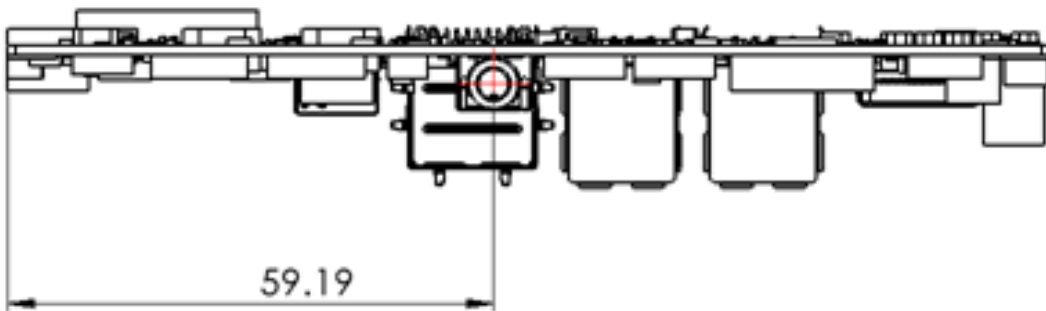
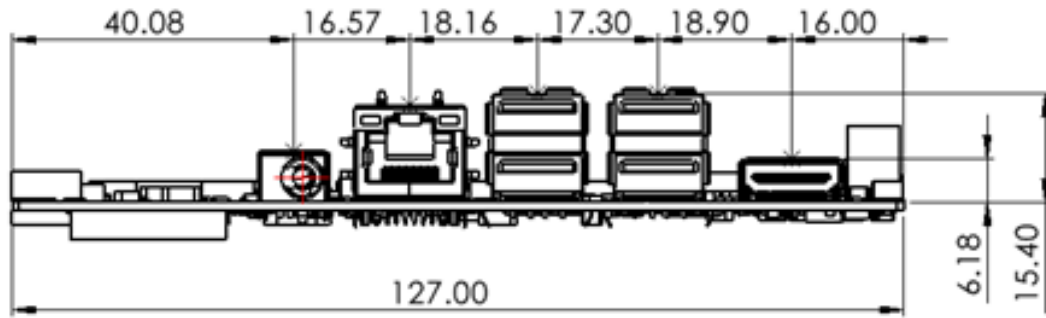
Block Diagram

BLOCK DIAGRAM



PCBA Dimension





Ordering Information

Model Name	Part Number	Description
NPI8M-GS/HDMI		HDMI display output
NPI8M-GS/LVDS		LVDS display output

Optional Accessories

Part Number	Quantity	Description
	1	Power Adapter 60W
	1	Power Cord
	1	Wi-Fi Module
	1	Wi-Fi Antenna
	1	Power Module (DC 9V~36V IN)
	1	Power Module (USB Type-C)
	1	RS422/RS485 Module
	1	UART Module

Revision Control

Draft A, 2023/02/06

Draft B, 2023/08/25

- Dimension change
- Internal USB ports quantity change
- Added USB in M.2 E-Key slot